

Woolgoolga High School

Newsletter

Issue 16 · October 20, 2017



Good luck Year 12 in your Higher School Certificate Exams



HSC exams commenced on Monday 16th October and continue to Friday 10th November.

Woolgoolga High School is considering partnering with ATOMI and will be trialling this resource until the end of October.

What is HSC Hub?

HSC Hub is one of Australia's leading HSC resource providers. HSC Hub produces thousands of syllabus specific HSC videos and resources aimed at increasing the academic performance of HSC students across New South Wales. HSC Hub works closely with a number of top academic schools to help teachers and students achieve more by increasing teaching flexibility and extending learning beyond the classroom. Access can be reached via this link: <https://getatomi.com/blog>

Tips on surviving HSC stress head to:

<https://headspace.org.au/young-people/surviving-school-exams-and-stress/>

INSIDE THIS ISSUE

| | |
|------------------------|--------|
| From the Principal | P.2 |
| Important coming dates | P.3 |
| Super Saturday | P.4 |
| Mathematics | P5-6 |
| PDHPE Bush Shelters | P.6 |
| Excursions | P.8-11 |
| Cricket and Careers | P.12 |
| Community Notices | P.13 |



From the Principal's Desk

Super Saturday, our testing point of the process for Year 6 students wishing to gain access to the 2018 Excel Class, was conducted last Saturday.

Super Saturday, our testing point of the process for Year 6 students wishing to gain access to the 2018 Excel Class, was conducted last Saturday and it was a privilege to speak with all of the parents who attended. The quality of these new Woolgoolga High School students was exceptional. A big thank you to all of those primary schools who have prepared this group of students for their successful pathway through high school. We are fortunate to have such quality local primary schools.

Congratulations to Isabella Lovelock as being one of the first HSC students to complete the new Higher School Certificate Aboriginal Languages course.

Last Tuesday, our staff combined for an afternoon professional learning session. ATOMI flew up one of their consultants to discuss with staff and highlight the benefits of this unique product designed to enhance HSC results. Although quite expensive, we are seriously considering its implementation in some form in 2018. Currently ATOMI (HSC Hub) has allowed all of our senior students and staff to trial the software. Our trial finishes in two weeks. If you have a senior student, I suggest having a look at the product.

Gemma Burrows led the second staff development session outlining strategies to help visually impaired students and finally, Heidi O'Brien from NESA (formerly Board of Studies) spent an hour discussing and outlining the new HSC to our staff. It was a very productive afternoon.

The next professional development afternoon will look at the new School Plan for 2018-20 followed by a wellbeing session focusing on differentiation and different learning needs in the classroom.

From all accounts, our students are very happy with the Higher School Certificate papers completed so far and I am certain each student will gain the results they deserve. Good luck Year 12 for the rest of your examinations.

Until next time
Guy Wright
Principal

IMPORTANT COMING EVENTS

| | |
|----------------------------|------------------------------|
| Mon 16 Oct - Fri 10 Nov | HSC Examinations |
| Mon 6 Nov | Year 8 VALID Testing |
| Fri 10 Nov | Year 12 Final Sign Out |
| Fri 10 Nov | Creative Expo |
| Thur 16 Nov | Year 12 Formal |
| Mon 27 Nov | SRC Announced |
| Tue 28 Nov - Fri 12 Dec | Year 10 Work Experience |
| Tue 5 Dec | Year 7 2018 Orientation Day |
| Tue 5 Dec | Year Excursion Grafton River |
| Thur 7 Dec - Fri 8 Dec | Year 7 Camp |
| Wed 13 Dec | Presentation Assembly |
| Fri 15 Dec | Last day for students |

**The WHS P & C
meets on the
second Tuesday of
every month at
6.30pm**

**Next meeting:
14 November 2017**

**Uniform Shop will be closed on
Friday 3rd November**

Southern Cross University Discovery Day Coffs Harbour Campus

Tuesday 31 October 2017 10:00am to 2:00pm, 31 October 2017

An opportunity for new Year 12 students (class of 2018) to find out about tertiary study options at Southern Cross University. Check emails and/or Facebook for more information and see Mr Burton for a permission note. Notes and money to be in to the Front Office by Friday 27 October.



**Science yearly exams for Years 7, 8 and 9
Monday 6th to Friday 10th November**

Term 4 Years 7-11 Maths test schedule

Year 7 - 7Red Thurs 2nd Nov, 7YGPB Tues 31st Oct: Decimals, Area & Volume, Data

Year 8 - Mon 6th Nov: Congruence, Probability, Rates & Ratios

Year 9 - 5.3 course Wed 8th Nov: Data, Surface Area & Volume, Co-ordinate Geometry

Year 9 - 5.2/1 course Wed 8th Nov: Money, Data, Area & Volume

Year 10 - 5.3 course Wed 8th Nov: Quadratics, Probability, Trigonometry, Circles

Year 10 - 5.2/1 course Wed 8th Nov: Probability, Simultaneous Equations

Year 11 General Tues Dec 5th - Similar Figures, Communication Focus Study, Driving Focus Study

Year 11 - Adv Maths Tues Wk9 Dec 5th

Year 11 - Maths Ext - date TBC

SUPER SATURDAY

On Saturday, 14th October Woolgoolga High School hosted Year 6 students from a variety of public schools in the local area.

These dedicated and ambitious students were vying for a position in the much coveted 7 Red Class which aims to extend the abilities of our gifted and talented students.

The students were first greeted by our Principal and instructed about the rights and obligations of being selected into this class. Students then went on to complete a variety of activities from the three KLA's – Science, Maths and English which will be used by a panel to decide who is eligible for selection into the 7Red Class.

Mr Green

Image has been blurred for privacy.



YEAR 7 BLUE MATHEMATICS – CALCULATING SURFACE AREA

Towards the end of Term 3, Year 7 Mathematics students learned about the concept of surface area. The students learn how to calculate the surface area of simple geometric shapes in the classroom. Year 7 Blue then ventured outside to apply their knowledge to practical situations around the playground. Armed with tape measures and recording instruments, the students formed small groups to measure and record the surface area of objects such as the seats on the playground, the library mural near the basketball courts, a small concrete slab and the seats near the canteen area. The students proceeded to calculate and record the area these objects occupy. This is a valuable exercise which exposes the students to concepts such as error or reading, conversion of units from millimetres to metres and the concept of square area. From their newly acquired knowledge the students move onto learning about and calculating volume.

Paul Bordignon

Information Technology and Mathematics Teacher



FINANCIAL LITERACY COURSE

A unique opportunity is afforded Year 11 students who are not accessing this information through their chosen courses to become more aware of how to manage finances such as budgeting, credit cards, access loans and other related issues. This is a 2-day course being held at Woolgoolga High on Wednesday, October 18 and Wednesday, November 1. There are 19 students enrolled and the course is provided by the Smith Family free of charge, with the students gaining a certification for their participation.

WORLD OF MATHS ROAD SHOW

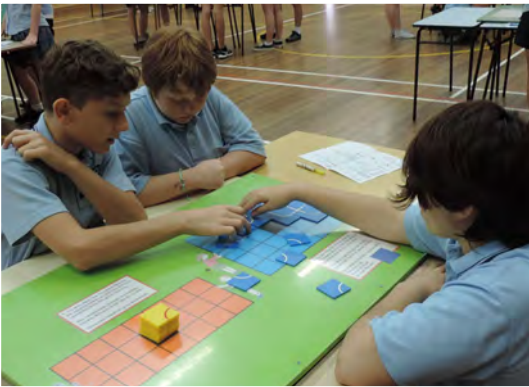
Every two years, up to 100 students from Years 7, 8 and 9 from Woolgoolga High School participate in the World of Maths Roadshow. This occurred last Tuesday, with students and staff alike using their brain power to investigate hands-on challenges and mind-benders for differing activities. Well done to Mrs Hart and Mrs Young for coordinating the event.

See <http://www.worldofmaths.com.au/>

World of Maths is a unique traveling maths show that provides fun, colourful, hands-on, mathematical, problem-solving activities for student participation in school visits since 1990.

The activities or “displays” have been invented/designed and manufactured by World of Maths and therefore would not be found anywhere else in the world.

The program has been designed to cater for all abilities, especially those in the field of Gifted and Talented Education.



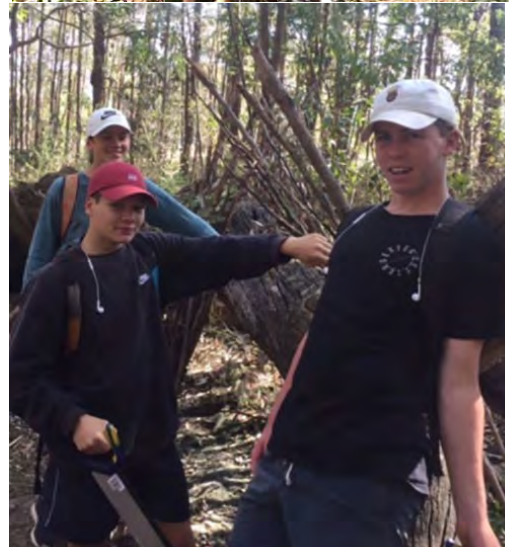
YEAR 9 PASS (PDHPE ELECTIVE) BUILD A BUSH SHELTER



Students learnt about site selection, suitable vegetation use, purposes of the "bush shelter" and how to build a bush shelter as part of their Outdoor Recreation unit in Term 3.

Kath Bear

HeadTeacher PDHPE



YEAR 10 FRASER ISLAND EXCURSION

On the last week of Term 3, 70 Year 10 students joined Trailblazer Tours for a 5-day camp to Fraser Island, Queensland.

We had an amazing time visiting some of the most beautiful creeks, lakes and rainforests on the island. We were very lucky to witness dingoes running along the beach, whales jumping and playing just beyond the breaks, turtles and manta rays from the spectacular Indian Head.

It was an exciting experience being a passenger on a 50 seater 4WD bus, driving on the 4WD tracks around the island. It was also exciting when we were on the ferry from Rainbow Bay over to the Island.

The last night at Brisbane was also pretty spectacular as we were able to do a night walk through the city which was lit up by many fluorescent lights. We hopped on a boat for a tour on the Brisbane river witnessing city lights by the water. It was definitely Mr Hourigan's favourite part!!

The camp finished with a day at MovieWorld and heaps of fun rides that gave all a good adrenaline rush. Especially the brand new Joker roller-coaster (thanks Kristy!!!).

It was an absolute pleasure taking such a great group of young people on this camp. A huge thank you to Mr Chadwick, Mr Hourigan and Mrs Rook for joining us on this camp. Without staff willing to volunteer, these events could not run!!

A huge thank you to all families who supported this fantastic camp.

Biggest thank you to all the amazing students who attended. As wonderful as Fraser Island was, the best part of this camp were the people who came. Thanks Year 10.

You are an amazing bunch of young people!! Hope you enjoyed this trip as much as I did.

Chris Hansen
Year Adviser





I loved Fraser because it was a great experience. I enjoyed Lake Wabby and Eli Creek because they were both very nice and seeing the dingoes was pretty cool. The thing I most enjoyed was walking through the bush.

Zander

What the
students
had to say

Fraser Island was a great experience and great time for us. We got to experience many great places such as Champagne Pool, Lake Wabby, Eli Creek and many other things. The dingoes were good to see in their natural environment. My favourite time was everything on the island.

Chloe and Holly



YEAR 8 AND 9 CAMP TO TULLEBUDGERA

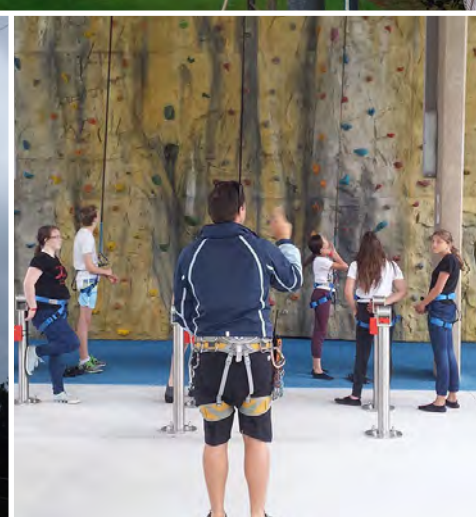
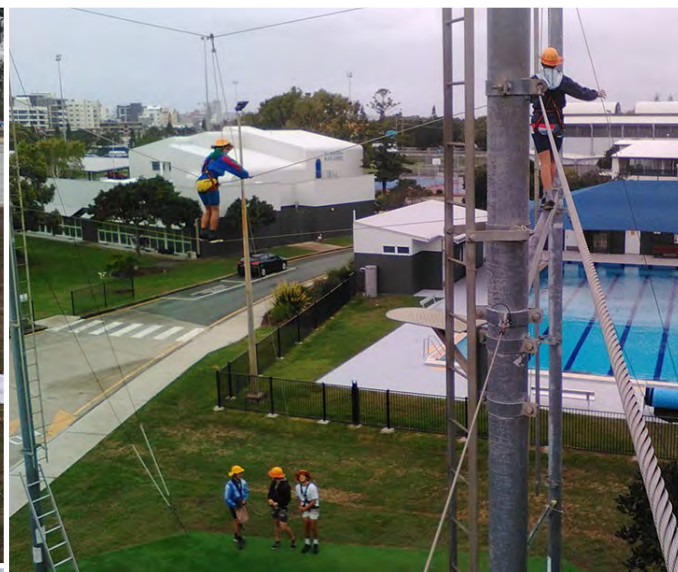
This week Years 8 and 9 went on their yearly camp to Tallebudgera for 3 days and 2 nights. They stayed at the Gold-Coast Recreation Centre. While on this camp Years 8 and 9 participated in group challenges such as The Giant Swing, High Ropes Course and Raft Building.

What the students had to say:

I loved this excursion, it has to be one of the best that I've been on. The group of students whom I lived with for 3 days couldn't have been better. The recreation centre's activities were awesome. I especially enjoyed the Team Rescue because of its multiple ways of completion. The accommodation was amazing, the mattresses were amazing and the cabins were large and comfy. I believe that not only has my year group grown stronger because of this camp but we have learnt important leadership skills for the future. Shannon Cave

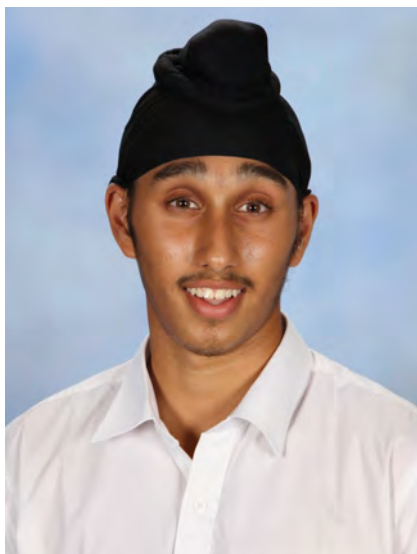
I thought this excursion was awesome. It helped me build confidence by pushing me to go out of my comfort zone. I feel like this excursion brought everyone closer together as a group and if more people came it would have been more beneficial. My favourite activity was the 'High Ropes'. At first I didn't want to do it, but I tried anyway and loved it. Thanks to Mr Pursch, Miss Spillett, Mr Wright, Daniel, Laurie (Group A's instructor) and everyone at the Recreation Centre. Taryn McCarthy

The Tallebudgera excursion was amazing and we all had a great time. The activities helped everyone with leadership skills, listening skills and confidence. Especially when you had to rely on your team to lower you safely to the ground after jumping off a 20m pole! We were well fed with pancakes, nachos and roast dinners and would like to thank the staff at the camp for the excellent food. This was one of the best excursions I have been on! Sophy Simson





Tallebudgera Recreation Centre



Congratulations to **Humraj Singh** (Year 11) having been selected as a fast bowler in the North Coast Open Boys Cricket team. Humraj will now compete at the 4-day NSW CHS State Cricket Championships to be held next month in Barooga on the NSW/Victorian border. Well done Humraj and good luck!

Congratulations

TRAINEESHIPS 2018



Jump start your career in the Horticulture Industry with a Traineeship at Costa Berry Exchange– Australia's largest grower and marketer of fresh fruit and vegetables.

School based and post school traineeships are currently available in Horticulture and Business commencing 2018.

School Based Trainees (SBTs) will need to consider availability and access to transport during Years 11 and 12 to attend:

- TAFE Coffs Harbour Campus on Wednesday afternoons to complete the formal training. (A flexible option may be available in Grafton).
- Paid work (8 hours per week) at Costa Berry Exchange – Range Road, Corindi Beach

Post School Trainees (PSTs) will need to attend work four days per week at Costa Berry Exchange, Corindi Beach and TAFE one day per week for up to 24 months.

To apply, speak to your careers adviser and/or complete and return the Expression of Interest form below. Expressions of Interest close on **Friday 3 November**. Candidates will be required to complete a Careergate on-line registration and assessment, attend an information session, work experience and interview as part of the selection process – dates to be confirmed.

For further enquiries phone Gabby Barlow or Barry Quayle at VERTO Apprenticeship Network on 1300 483 786.

See Mr Burton in the Careers/Library office for more information.

Community Notices



Family and Relationship Services TERM 4 Workshops 2017

| How to Talk so Kids will Listen | <p>This half-day workshop provides parents with information about children's intellectual and emotional development and using emotional intelligence to communicate more effectively.</p> <p>MACLEAN TAFE - 9.30am-12.30pm November 14 DORRIGO - 9am-12pm December 1 BOAMBEE EAST - 9.30am-12pm December 5 GRAFTON - 9.30am-12.30pm December 7</p> | Managing Anger | <p>A short workshop with information and strategies for managing anger and teaching children the safe expression of strong emotions .</p> <p>GRAFTON - 9.30am-12.30pm November 21</p> | | | | | | | | | | |
|----------------------------------|--|--|---|--------|--|----------------|-------------------------------|--------------|--------------------------------------|-------------------------------|--------------------------------|------------------------|---------------------------|
| Tuning into Kids | <p>This program supports parents in teaching their children how to understand and regulate their emotions, build resilience and develop good communication skills.</p> <p>GRAFTON - 9.30am-12.30pm (6 week program) October 12, 19, 26 & November 9, 16, 23</p> | Tuning in to Teens | <p>A six week parenting program designed to assist parents to communicate with their teen and build stronger relationships.</p> <p>GRAFTON - 1pm-4pm (6 week program) October 18, 25 & November 1, 8, 15, 22</p> | | | | | | | | | | |
| After the Storm | <p>CV Women's Refuge and Outreach Service and CRANES have partnered in a six week course to support those parenting after family violence.</p> <p>GRAFTON - 9.30am-12pm (6 week program) October 25 & November 1, 8, 15, 22, 29</p> | How to Talk so Teens will Listen | <p>This half-day workshop provides parents with information about their teen's emotions and behaviours, communication styles and building stronger relationships with teens.</p> <p>BOAMBEE EAST - 1pm-3.30pm December 5</p> | | | | | | | | | | |
| Understanding Your Child's Brain | <p>Understanding brain development can assist in parenting and staying connected through to adulthood.</p> <p>MACLEAN TAFE - 9.30am-2pm November 28</p> | <table><tr><th colspan="2">VENUES</th></tr><tr><td>CRANES Grafton</td><td>3-7 Prince Street (river end)</td></tr><tr><td>Maclean TAFE</td><td>Woombah Street (next to high school)</td></tr><tr><td>Boambee East Community Centre</td><td>Bruce King Drive, Boambee East</td></tr><tr><td>Dorrigo Primary School</td><td>2 Hickory Street, Dorrigo</td></tr></table> | | VENUES | | CRANES Grafton | 3-7 Prince Street (river end) | Maclean TAFE | Woombah Street (next to high school) | Boambee East Community Centre | Bruce King Drive, Boambee East | Dorrigo Primary School | 2 Hickory Street, Dorrigo |
| VENUES | | | | | | | | | | | | | |
| CRANES Grafton | 3-7 Prince Street (river end) | | | | | | | | | | | | |
| Maclean TAFE | Woombah Street (next to high school) | | | | | | | | | | | | |
| Boambee East Community Centre | Bruce King Drive, Boambee East | | | | | | | | | | | | |
| Dorrigo Primary School | 2 Hickory Street, Dorrigo | | | | | | | | | | | | |

CRANES' workshops are FREE of charge - Some workshops have FREE childcare - **Bookings essential**

Call CRANES for enquires or to register (no referral necessary)

Ph: (02) 6642 7257 Email: FaRS@cranes.org.au

CRANES' Family and Relationship Services is funded by the Dept. of Social Services

About CRANES

We have a vision for the future of our society that sees all people as valuable, respects difference and offers everyone a place in their neighbourhood. We are working with innovation in an environment where we have blown away the boxes and, most importantly, because we believe in social justice, liberty and freedom for everyone.

What we do

NDIS Approved Provider
 Home Care Package Provider
 Abilities and Over 65s Services
 Hubs and Clubs
 Support with Social and Daily Life Activities
 Child Youth and Family Services
 Family and Relationship Services
 Supervised Access
 In Home Childcare
 Supported Playgroups
 Early Childhood Intervention
 Jacaranda Preschool
 Healthy Minds Programs
 Suicide Prevention
 Alternative to Hospital Program
 First People Services
 Elders Groups
 Palliative Care
 Wilderness Adventures
 Specialist Accommodation
 (Shared Lives & Square Nests)

Contact us

Grafton Office
 3-7 Prince Street,
 Grafton NSW 2460.
 PO Box 889,
 Grafton NSW 2460.

Maclean Office
 18-20 Clyde Street,
 Maclean NSW 2463.
 PO Box 889,
 Grafton NSW 2460.

Phone: (02) 6642 7257
Fax: (02) 6645 5029
E-mail: admin@cranes.org.au

Find us on 

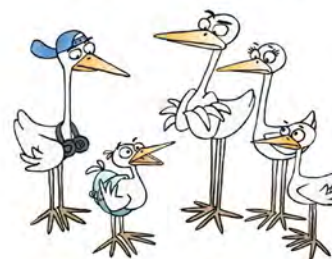
Hours of operation
 8am to 4.30pm
 Monday to Friday

For more information on
 'what CRANES do'
 visit our website



Family and Relationship Services

Parenting programs



Term 4 calendar
 October to December 2017

We are one team made up of
 difference and we continue to
 learn and respect that

www.cranes.org.au

Promoting freedom of choice
 for individuals and families

Homestay Hosts Wanted

We are looking for caring families and individuals to provide a wonderful home away from home for international students attending Woolgoolga High School.

Must be able to provide meals and a Working With Children Check.

Hosts receive \$285 per week for a single room. Short (1 term) to long (4 terms) stays are available.

Apply online at www.staydownunder.com.au

For further information contact Stay DownUnder on (02) 8901 4499

Or school co-ordinator Ms Genette Maniatis (02 6654 1500)



MONSTER AUCTION



Woolgoolga Rotary Auction of used household goods takes place the first Saturday of every month except January for small goods, furniture and a whole lot of mixed items. Location is the Rotary shed behind the CWA, next to the RSL club in Beach Street (parking available behind the RSL club). Come down to grab a bargain!

For further information visit <http://woolgoolgarotaryclub.org.au/>

Safety First

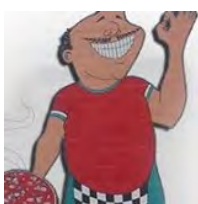
Parents, carers and students are reminded not to use the staff car park for dropping off or picking up their children, unless using the disabled parking bays.

Our car park is very congested, especially on rainy days directly before school begins and after school finishes. Parking is available at the front of the school for safety and a covered walkway for students' convenience leads from the bus bay into the grounds.



REMINDER

NO use of aerosols at school due to health and safety of our school community. Please buy a roll on deodorant alternative.

**Opening Hours****Monday to Saturday****7.30 to 9.30am - 4.00 to 6.00pm****Sunday - 4.00 to 6.00pm****Other Times By Appointment.***Phone Heather & Max on...***0429 661 953**www.purrfectcoffscats.com.au**17 Lake Russell Drive
Emerald Beach****After
School
Tuition
Woolgoolga***All ages, All abilities, All subjects**Qualified Teachers**Individual or small group***2/7-9 Market St, Woolgoolga****Phone: 6654 8397W or 66522222CH****PAID ADVERTISING*****Woolgoolga High School Silver Awards are
generously sponsored by:****Years 7, 8, 9 receive vouchers from***McDonalds Restaurants****Pacific Highway Coffs Harbour***Years 10, 11, 12 receive vouchers from***Riptide Pizzeria****Fawcett Street Woolgoolga****Phone: 6654 8989****Woolgoolga Pizza Place****Beach Street Woolgoolga****Phone 66542744**

Parent Online Payment (POP)

Now Available At Woolgoolga High School

A secure Westpac banking facility has now been added to the Woolgoolga High School website to allow parents/carers to make online Visa or Mastercard credit or debit card payments for things like voluntary school contributions, excursions, sporting activities or sales to students.

Look for the *\$ Make a Payment* button next to *Contact Us* at the top of our homepage.

For those experienced in paying online, the process will be familiar. Detailed instructions are available by opening the *Parent Online Payment Instructions* on the *Information* tab on our website.

We hope that you will find this payment option convenient. Payments can still be made at the Woolgoolga High School Office by cash, cheque or EFTPOS before school and during break 1.

<http://www.woolgoolga-h.schools.nsw.edu.au/>

Canteen—Eat Fresh

<http://www.woolgoolga-h.schools.nsw.edu.au/parent-information>

See menu with price list on the school's website

Volunteers needed to serve in only 1 hour increments:

8.30am - 9.30am

11.00am - 12.00 noon

1.00pm - 2.00pm

If you can help please ring the school on 66541500 or follow the link on the school's website to complete the expression of interest.

